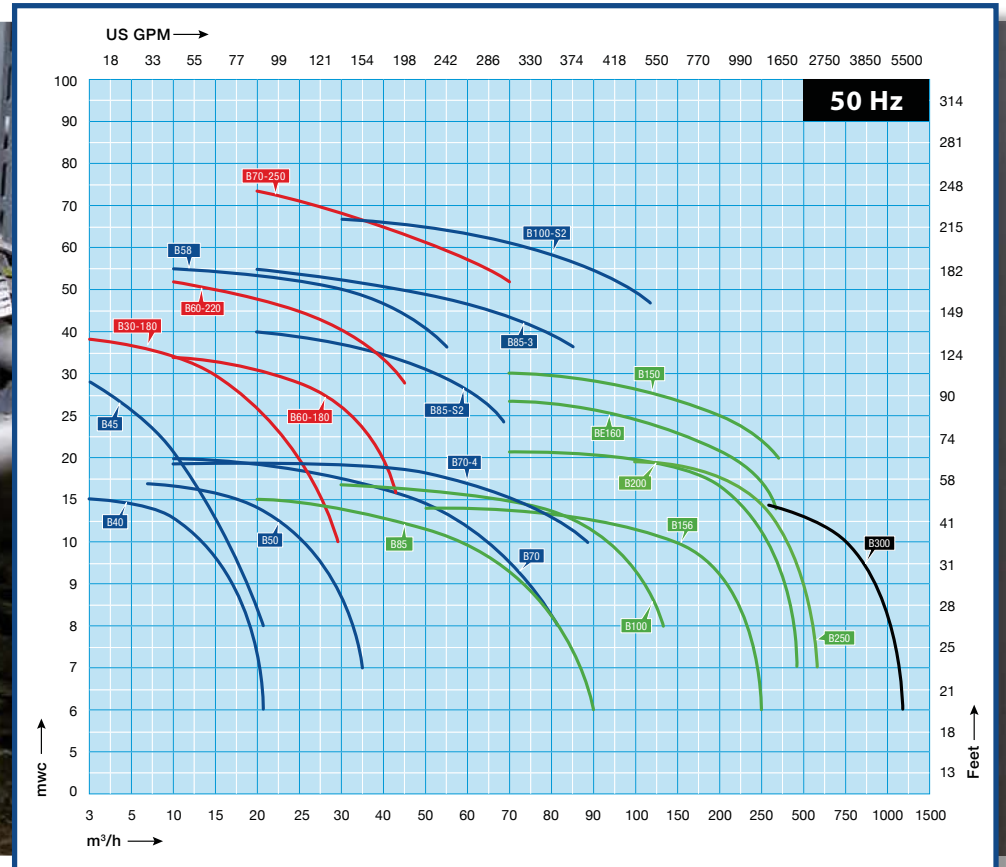


# Self-Priming Pumps

## B Series



## Basic and reliable technology

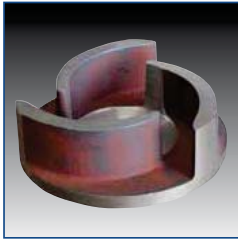
The B range of pumps has been designed with a clear focus on reliability, efficiency and durability.

The rotation of the impeller draws the air present in the suction pipe into the pump casing. The air mixes with the liquid present in the pump casing. Liquid and air are transported to the discharge outlet. When all the air has been removed from the suction pipe, the pump draws in liquid. The built-in non-return valve at the suction side prevents the pump casing from being siphoned empty when the pump stops. In this way, some liquid will always remain in the pump casing, so immediate re-prime is always possible.

# The heart of the matter

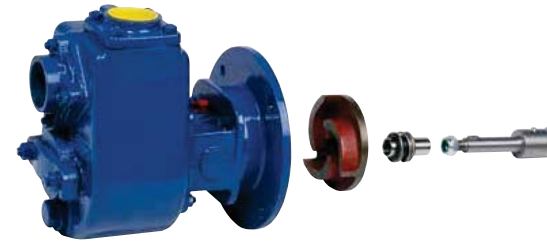
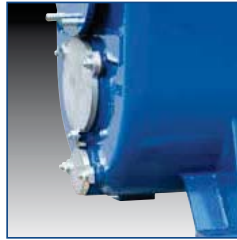
## Semi open impeller

The pumps are constructed with a semi open impeller which is running against a changeable wearplate. Available in cast iron, bronze and stainless steel.



## Large inspection covers

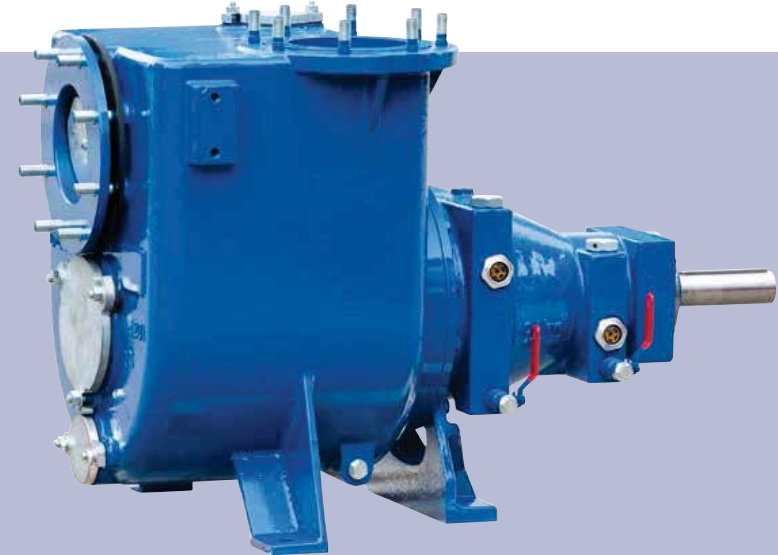
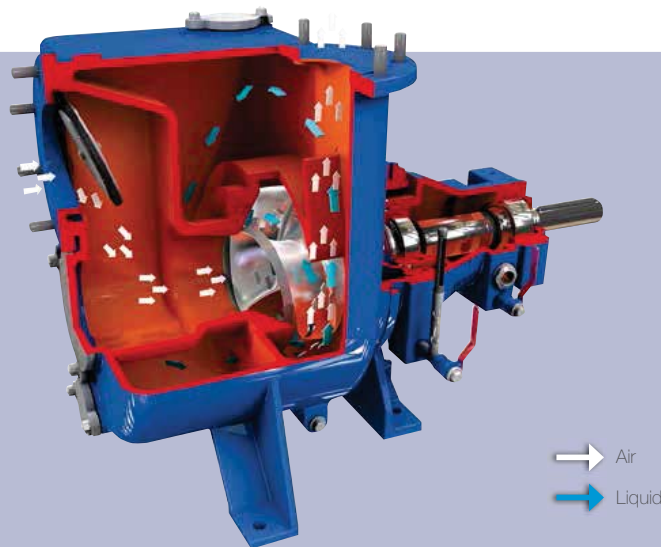
Easy access to float box, impeller and non-return valve.



Stub shaft.



Bronze pump casing (BVBMC).



## Cutter blade

Several types can be fitted with a stainless steel cutter blade in the impeller for liquids containing fibrous materials.



Wheelbarrow frame (+KW).

## Optional Features

Mechanical seals		Extras	
T3W seal	HM / HM / Viton	+F	DIN flanges
MG1 seal	Sic / Sic / EPDM	+FK	DIN flanges, stainless steel 316
		+B	Bronze impeller; stainless steel 316 shaft
		+BII	Bronze impeller/wear plate, stainless steel 316 shaft
		+KI	Stainless steel 316 impeller and shaft
		+KII	Stainless steel impeller, wear plate and shaft
Gaskets		+M	Cutting blade
N	NBR: Perbunan	+P	Perma grease cartridge
V	FPM: Viton	+VP	Grease glass for seal lubrication
E	EPDM	+KW	Wheelbarrow frame
T	PTFE: Teflon		Motor 440V – 60Hz
K	FFKM, Kalrez		

Contact us for more optional features.

# B Series

## Electrically Driven Pumps, 2-pole

Models from DN 40 (1,5") to DN 100 (4"). The pumps have been designed for speeds of 1.500 to 3.600 rpm and are driven by a two-pole electric motor. The specific feature of these models is their small size in combination with a large free passage.



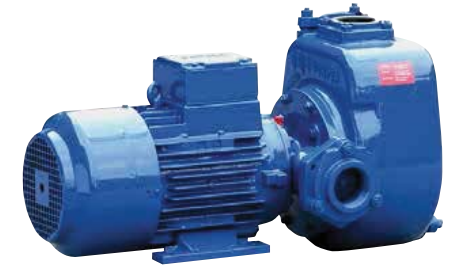
Model	Pump			Connection		Motor 400V 50Hz		Assembly
	Flow m <sup>3</sup> /h	Head mwc	ø mm	mm	inch	Power kW	Speed rpm	
B40	21	15	18	40	1,5"	1,5	2850	BVGMC
B45	22	29	14	40	1,5"	2,2	2850	BVGMC
B50	35	18	25	50	2"	2,2	2850	BVGMC
B58	56	55	22	50	2"	15	2930	BVGMC
B70	82	20	22	80	3"	4	2900	BVGMC
B70-4	90	19	30	80	3"	5,5	2880	BVGMC
B85-S2	76	44	15	80	3"	11	2930	BVGMC
B85-S3	86	57	18	80	3"	18,5	2930	BVGS
B100-S2	120	62	29	100	4"	30	2950	BVGS

Contact us for the technical data of the 60 Hz models.



## Electrically Driven High Head Pumps, 2-pole

Models from DN40 (1,5") to DN80 (3"). The pumps differ from the other models in the B series in higher pressure ratings. These models find applications in jetting, pressure boosting and wash plants. The pump inlet is located at the drive end side, this results in a reduced load on the drive end.



Model	Pump			Connection		Motor 400V 50Hz		Assembly
	Flow m <sup>3</sup> /h	Head mwc	ø mm	mm	inch	Power kW	Speed rpm	
B30-180	32	39	12	50 - 40	2" - 1,5"	4	2900	BVGMC
B60-180	45	35	18,5	50	2"	5,5	2880	BVGMC
B60-220	45	53	14	50	2"	11	2930	BVGMC
B70-250	70	74	12	80	3"	22	2940	BVGMC

Contact us for the technical data of the 60 Hz models.



# B Series

## Electrically Driven Solids Handling Pumps, 4-pole

Models from DN80 (3") to DN250 (10"). The pumps are designed for speeds from 1.000 to 2.000 rpm. The pump casings are thick-walled, especially in those areas that are subject to wear during pumping of abrasive liquids. Their rugged construction makes them suitable for use under difficult conditions, for continuous operation, for abrasive and aggressive fluids.



Model	Pump			Connection		Motor 400V 50Hz		Assembly
	Flow m³/h	Head mwc	ø mm	mm	inch	Power kW	Speed rpm	
B85	90	16	40	80	3"	5,5	1450	BVGMC
B100	140	18	46	100	4"	7,5	1460	BVGMC
B150	300	32	40	150	6"	30	1470	BVGS
B156	260	14	46	150	6"	11	1460	BVGMC
BE160	300	17	80	150	6"	15	1460	NMC
B200	480	22	70	200	8"	37	1475	BVGS
B250	600	20	70	250	10"	37	1475	BVGS

## Diesel Driven Jet Pumps on Wheelbarrow

These pumps are self-priming and reliable for jetting well point filters, cleaning and as fire fighting units.



Pump				Diesel engine				Assembly	Stock model
Model	Flow m³/h	Head m	ø mm	Brand	Model	Power kW	Speed rpm		
B30-180	32	37	12	Hatz	1B40 h.s.	7	3000	Wheelbarrow	<input checked="" type="checkbox"/>
B60-220	45	53	14	Hatz	1D90Z e.s.	11	3000	Wheelbarrow	<input checked="" type="checkbox"/>
B70-250	70	74	12	Hatz	2M41	24	3000	Wheelbarrow	<input checked="" type="checkbox"/>
B85	90	16	40	Hatz	1D81Z h.s.	5,5	1500	Wheelbarrow	<input checked="" type="checkbox"/>



B70-250 Hatz 2M41



B60 - 220 Hatz 1D90

# B Series

## BE Series Open Diesel

The wet self-priming pump casing of the B series is combined with the back pull-out of the BA series with its unique E-impeller. This combination of a large free passage, high efficiency and excellent NPSH values results in an outstanding pump set.



Model	Pump			Diesel engine				Assembly	Stock model
	Flow m <sup>3</sup> /h	Head m	Ø mm	Brand	Model	Power kW	Speed rpm		
BE160 D254	345	27	80	Perkins	404D-22	26	1800	BF10-23	<input checked="" type="checkbox"/>
BE160 D254	345	27	80	Hatz	3M41	28	1800	BF10-23	



BE160 site trailer.

## Tractor Driven Flood Control Pumps: B300

The B300 TWGT is an application designed flood control pump concept. The design allows a direct PTO tractor drive without any additional transmission. Self priming, simple and reliable. With a maximum flow capacity of 1.200 m<sup>3</sup>/h and solids handling of 70 mm. Ready for any emergency job! A must have pump for municipalities and governmental agencies.



Model	Pump			Motor 400V 50Hz			Assembly	
	Connection mm	inch	Flow m <sup>3</sup> /h	Head mwc	Ø mm	Power kW		Speed rpm
B300	300	12"	1200	14	70	55	960	T3WGT