

# Sludge Pumps

## BV Series



## Bentonite & drilling sludge

With the BV auto prime sludge pump range, BBA Pumps offers a series of vacuum assisted centrifugal pumps for abrasive liquids. Designed for pumping drilling sludges and bentonite in order to meet the toughest pump jobs.

### Find out about the BV series

The BV series is the one of a kind pump solution in drilling processes. It offers:

- Lowest costs of ownership
- Robust pump concept
- Reliability
- Large vacuum capacity
- Low maintenance costs



# The heart of the matter

## Steel welded components

The pump casing and impeller are steel welded quality. Hardox wearplates are standard.



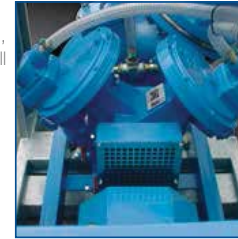
## Easy inspection

Inspection, drain and fill plugs all on one side. One type of oil needed; engine included.



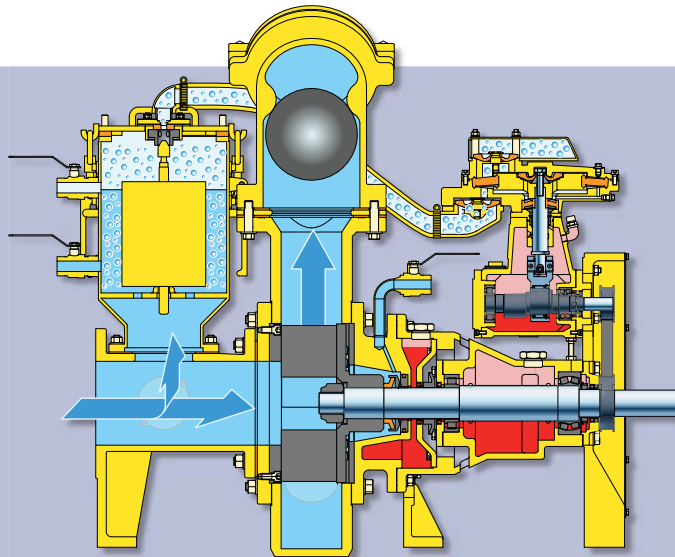
## Reliable vacuum pump

Diaphragm pump, air cooled, water resistant and oil spill free. 100 m<sup>3</sup> air capacity per hour.

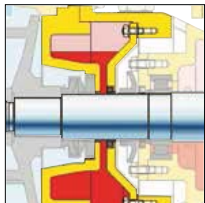


## Large inspection covers

Full access to suction line, float box, impeller and valve.



After starting the unit, the vacuum pump starts priming air out of the suction line. A non-return valve shuts off the discharge side. As soon as the pump is primed, the float closes the vacuum pump connection and the centrifugal pump starts pumping liquid.



### 1 Large oil chamber

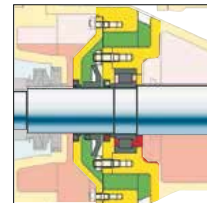
For optimal cooling when running dry or in snore mode.

The Enduroseal<sup>®</sup> concept consists of three main components:



### 2 Mechanical seal

Tungsten Carbide surfaces in heavy duty stainless steel body. For the BV the Enduroseal<sup>®</sup> is extended with a seal flush connection.



### 3 Pressure relief chamber

Makes it impossible for any fluid to enter the bearing housing.

## Float box with quick clean system

A fully mechanical reliable solution for optimal separation of water and air.



## Interchangeability

Modular built; assures minimum stock of parts.

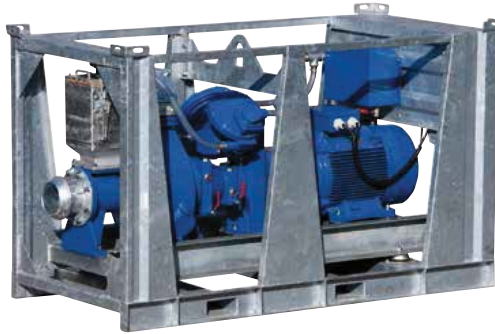




# BV Series

## Electrically Driven Sludge Pumps

- Heavy baseframe with quality motor and flexible coupling.
- Galvanised stackable frame with lifting hook and forklift pouches.
- Electric panel with softstarter and optional hour counter, float switch and emergency stop.



Model	Pump			Drive				Assembly	Stock model
	Flow m <sup>3</sup> /h	Head m	Ø mm	Motor	Model	Power kW	Speed rpm		
BV100 D240	165	26	86	E-motor	400/690V	22	1500	Stackable	<input checked="" type="checkbox"/>
BV140 D285	350	20	105	E-motor	400/690V	37	1500	Stackable	<input checked="" type="checkbox"/>

Air capacity 100 m<sup>3</sup>/h



## Diesel Driven Sound Attenuated Sludge Pumps

Model	Pump			Drive				Assembly	Stock model
	Flow m <sup>3</sup> /h	Head m	Ø mm	Motor	Model	Power kW	Speed rpm		
BV100 D240	150	17	86	Hatz	2M41	15	1500	E12-25	
BV140 D285	370	22	105	Hatz	4M41	33	1500	E12-25	

Air capacity 100 m<sup>3</sup>/h

## Open Diesel

The BV open diesel configurations are heavy duty built. Available with float switch start and as trailer model.



Model	Pump			Drive				Assembly	Stock model
	Flow m <sup>3</sup> /h	Head m	Ø mm	Motor	Model	Power kW	Speed rpm		
BV100 D240	150	17	86	Hatz	2M41	15	1500	Stackable	
BV140 D285	370	22	105	Hatz	4M41	33	1500	Stackable	

Air capacity 100 m<sup>3</sup>/h. Also available in silent pack.